

# TNPSC GROUP – IIA MAIN – 2025 / 26

## SSS TEST SERIES

Number of Tests:  
20

Commence on:  
28.12.2025  
(Sunday)

Test Time:  
10.00 a.m. – 1.00 p.m



### TEST SERIES

THREE  
CORE PHASES :  
OF SSS  
TEST SERIES

1. THE FOUNDATION PHASE : TOPIC-WISE UNITS COVERING THE ENTIRE SYLLABUS.

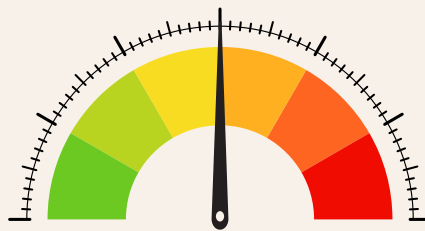
2. THE INTEGRATION PHASE : SOURCE-BASED ANALYSIS TO DEVELOP CRITICAL SKILLS.

3. THE SIMULATION PHASE : FULL-LENGTH MOCK EXAM MILESTONES UNDER REAL CONDITIONS.

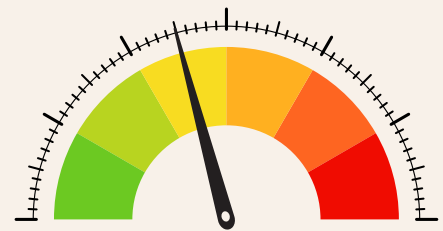
### DIFFICULTY LEVEL



15% EASY  
DIRECT FROM TEXT BOOKS



50% MODERATE  
NEEDS LINKING 2–3 SOURCES



35% HARD  
MULTIDIMENSIONAL,  
EXACTLY LIKE TNPSC 2023–2025 PAPERS

NUMBER OF  
QUESTIONS FOR  
EACH TEST – 200  
SUPPORTING  
RESOURCES FOR  
THE TEST SERIES

TEST DISCUSSION  
FOR  
GENERAL STUDIES

SEPARATE  
TEST DISCUSSION  
FOR GENERAL  
INTELLIGENCE AND  
REASONING

TWO  
MODEL EXAMS

TESTS

NO. OF TESTS



MANDATORY

12

TURBO

5

PRACTICE

3



S.No	Date	Day	Subject
1	28.12.2025	Sunday	Modern History of Tamilnadu and General Intelligence & Reasoning
2	31.12.2025	Wednesday	Tamil Literature and Reasoning
3	02.01.2026	Friday	Thirukural
4	04.01.2026	Sunday	Tamilnadu Socio Political Movements and General Intelligence & Reasoning
5	07.01.2026	Wednesday	Tamilnadu Administration and General Intelligence & Reasoning
6	09.01.2026	Friday	Indian Polity
7	11.01.2026	Sunday	Science and Technology - I and General Intelligence & Reasoning
8	14.01.2026	Wednesday	Science and Technology - II and General Intelligence & Reasoning
9	16.01.2026	Friday	Tamilnadu Economy
10	18.01.2026	Sunday	Social Issues and General Intelligence & Reasoning
11	21.01.2026	Wednesday	EVS and Disaster Management I and General Intelligence & Reasoning
12	23.01.2026	Friday	Geography
13	25.01.2026	Sunday	EVS and Disaster Management II and General Intelligence & Reasoning
14	28.01.2026	Wednesday	Schemes (Tamilnadu) and General Intelligence & Reasoning
15	30.01.2026	Friday	Schemes (National)
16	01.02.2026	Sunday	Model Exam I
17	04.02.2026	Wednesday	Model Exam II

TEST BATCH SCHEDULE

TEST – I

PART – A

UNIT I : MODERN HISTORY OF TAMIL NADU  
(150 MARKS)

Advent of Europeans

- ◆ Portuguese
- ◆ Dutch
- ◆ English
- ◆ Danish
- ◆ French

War

- ◆ Anglo French Rivalry
- ◆ Anglo-Mysore War
- ◆ Anglo-Maratha War

Revolt

- ◆ The Polligar rebellion
- ◆ Vellore Mutiny

Reform Movements

- ◆ Socio-religious reforms in the 18th and 19th centuries
- ◆ Christian Missionaries
- ◆ Brahmo Samaj
- ◆ Arya Samaj
- ◆ Theosophical Society
- ◆ Ramakrishna Mission
- ◆ Madras Native Association
- ◆ Madras Mahajana Sabha

# REFORMS OF BRITISH EAST INDIA COMPANY'S RULE IN TAMIL NADU

## Emergence of Freedom Struggle in Tamil Nadu

- ◆ Indian National Movement
- ◆ Swadeshi Movement
- ◆ Moderates and Extremists in Tamil Nadu
- ◆ Home Rule Agitation
- ◆ Non-Cooperation Movement
- ◆ Civil Disobedient Movement
- ◆ Quit India Movement
- ◆ Journalists
- ◆ Women activists
- ◆ Revolutionary songs

## PART - B

### GENERAL INTELLIGENCE & REASONING (50 MARKS)

- ◆ Odd One out
- ◆ Analogy
- ◆ Alphabet Test
- ◆ Coding & Decoding

## TEST - II

### TAMIL LITERATURE

#### ANCIENT TAMIL SOCIETY

#### Archeological excavation evidence

- ◆ Arikamedu
- ◆ Adichanallur
- ◆ Keezhadi

#### Sangam Literature

- ◆ Advent of Sangam era

## PART – B

### GENERAL INTELLIGENCE & REASONING

- ◆ Relationship Concepts
- ◆ Dice
- ◆ Direction and Distance
- ◆ Logical Venn diagrams

#### TEST – III

### THIRUKURAL

#### Thirukkural

- ◆ Philosophical thoughts
- ◆ Concepts
- ◆ Life principles
- ◆ Social principles
- ◆ Management principles
- ◆ Other principles

#### TEST – IV

### TAMILNADU SOCIO POLITICAL MOVEMENTS

#### Socio-political movements of 19th and 20th centuries:

- ◆ Justice Party
- ◆ Development of Rationalism
- ◆ Self-Respect Movement
- ◆ Dravidian Movement
- ◆ Tani Tamil Iyakkam (Pure Tamil Movement)
- ◆ Literary personalities

#### Tamil Society Reforms personalities:

- ◆ Thanthai Periyar
- ◆ Arignar Anna
- ◆ Other scholars

## PART – B

### GENERAL INTELLIGENCE & REASONING

- ◆ Arithmetical reasoning
- ◆ Verification of Truth of the Statement
- ◆ Calendar
- ◆ Permutation Combination

## TEST – V

### TAMILNADU ADMINISTRATION

#### State Government

- ◆ Chief Minister
- ◆ Council of Ministers

#### Tamil Nadu Legislative Assembly

- ◆ Structure
- ◆ Powers
- ◆ Functions

#### Local Governments

- ◆ Three-tier system
- ◆ 73rd and 74th Constitutional amendments
- ◆ Tamil Nadu Panchayat Act 1994
- ◆ Grama Sabha

#### Tamil Nadu Administration

- ◆ Nature
- ◆ Evolution
- ◆ Functions
- ◆ Salient features

#### Organisational structure

- ◆ Secretariat
- ◆ Chief Secretary
- ◆ Additional Chief Secretary
- ◆ Principal Secretary

## District Administration: Role, Functions of

- ◆ District Collector
- ◆ District Revenue Officer
- ◆ Revenue Divisional Officer
- ◆ Tahsildar
- ◆ Block Development Officer
- ◆ Revenue Inspector
- ◆ Village Administrative Officer

## E-Governance

- ◆ E-Governance Policy
- ◆ Mobile-Governance initiatives

## TAMIL NADU STATE'S SPECIALISED UNDERTAKINGS AND AGENCIES

### PART – B

## GENERAL INTELLIGENCE & REASONING

- ◆ Inserting the missing characters
- ◆ Logical reasoning
- ◆ Figural series
- ◆ Numerical Operations

### TEST – VI

## INDIAN POLITY

## Constitution of India

- ◆ Philosophical features
- ◆ Salient features
- ◆ Sources
- ◆ Preamble
- ◆ Union, States and Union Territories
- ◆ Citizenship
- ◆ Fundamental Rights
- ◆ Fundamental Duties
- ◆ Directive Principles of State Policy

## Union Government

- ◆ President
- ◆ Vice-President
- ◆ Prime Minister
- ◆ Council of Ministers

## Parliament

- ◆ Lok Sabha
- ◆ Rajya Sabha

### TEST – VII

## SCIENCE AND TECHNOLOGY – I

- ◆ Full Syllabus

### PART – B

## GENERAL INTELLIGENCE & REASONING

- ◆ Symbolic operations
- ◆ Word building
- ◆ Statement and Conclusion
- ◆ Address matching

### TEST – VIII

## SCIENCE AND TECHNOLOGY – II

- ◆ Full Syllabus

### PART – B

## GENERAL INTELLIGENCE & REASONING

- ◆ Embedded figures
- ◆ Visual reasoning
- ◆ Figural classification
- ◆ Puzzles
- ◆ Seating Arrangements

## TEST – IX

### TAMILNADU ECONOMY

#### Tamil Nadu Economy

- ◆ Features

#### State Budget

- ◆ Major revenue and expenditure
- ◆ State Income types

#### State's Economic growth

- ◆ Agriculture
- ◆ Industry
- ◆ Service Sector

#### Agriculture

- ◆ Major crops
- ◆ Food grains
- ◆ Cash crops

#### Types of farming

- ◆ Organic farming
- ◆ Inorganic farming
- ◆ Contract farming

#### Farmers Producers Organisation (FPO)

- ◆ Agricultural Marketing
- ◆ Issues of Marketing
- ◆ Online Marketing

#### Agriculture Budgeting

- ◆ Features

## TEST – X

### SOCIAL ISSUES

#### Education

- ◆ Illiteracy
- ◆ Gross Enrolment Ratio (GER) in schools and colleges

- ◆ Measure and recent data
- ◆ Student welfare schemes
- ◆ Recent schemes for education
- ◆ Linkage between education and social development

## Poverty and Unemployment

- ◆ Unemployment issues
- ◆ State Government poverty alleviation schemes and employment generation schemes
- ◆ Labour migration

## Population

- ◆ Population growth rate
- ◆ Sex ratio
- ◆ Density of population
- ◆ Causes for population growth
- ◆ Population control programmes
- ◆ Family planning and its achievements

## CHILD LABOUR ISSUES

### Health

- ◆ Vital Statistics
- ◆ Recent health schemes

## Women Empowerment

- ◆ Domestic violence
- ◆ Dowry problems
- ◆ Sexual assault
- ◆ Laws and awareness programmes
- ◆ Women welfare schemes
- ◆ Self Help Groups

## Marginalised Groups

- ◆ Problems
- ◆ Scheduled Castes and Scheduled Tribes
- ◆ Elderly
- ◆ People with disability
- ◆ Transgender
- ◆ Religious minorities
- ◆ State Government welfare programmes to marginalised groups

## PART – B

## GENERAL INTELLIGENCE & REASONING

- ◆ Full Syllabus

## TEST – XI

### EVS AND DISASTER MANAGEMENT – I

- ◆ Full Syllabus

## PART – B

### GENERAL INTELLIGENCE & REASONING

- ◆ Full Syllabus

## TEST – XII

### GEOGRAPHY

#### Geography

- ◆ Location
- ◆ Administrative units
- ◆ Relief features
- ◆ Major Rivers

#### Climate

- ◆ Temperature
- ◆ Rainfall
- ◆ Monsoon

#### Soil

- ◆ Classification
- ◆ Distribution

#### Forests

- ◆ Classification
- ◆ Distribution
- ◆ Wildlife
- ◆ Bird's sanctuaries
- ◆ Forest products

#### Livestock

- ◆ Cattle
- ◆ Dairying

## Fishing

- ◆ Freshwater
- ◆ Saline water fishing

## Irrigation

- ◆ Types and distribution of canal
- ◆ Tank
- ◆ Well irrigation
- ◆ Watershed
- ◆ Minor irrigation projects

## Minerals

Distribution and production of

- ◆ Iron ore
- ◆ Bauxite

Power

## Resources

- ◆ Coal
- ◆ Petroleum

## Industries

- ◆ Iron and steel
- ◆ Textiles
- ◆ Cement
- ◆ Automobile
- ◆ Sugarcane
- ◆ Cotton industries

## Transport

- ◆ Road
- ◆ Railway
- ◆ Air
- ◆ Sea transport

## TEST – XIII

### EVS AND DISASTER MANAGEMENT – II

- ◆ Full Syllabus

## PART – B

### GENERAL INTELLIGENCE & REASONING

◆ Full Syllabus

## TEST – XIV

### SCHEMES (TAMILNADU)

#### Welfare Schemes

- ◆ Tamil Nadu Government sponsored welfare schemes and measures (Since 1990) - objectives, issues and challenges in the implementation - Impact of welfare schemes and measures on the socio-economic development of the people

## PART – B

### GENERAL INTELLIGENCE & REASONING

◆ Full Syllabus

## TEST – XV

### SCHEME (NATIONAL)

#### Welfare Schemes

- ◆ Central Government sponsored welfare schemes

### APPOLO STUDY CENTRE

25, Nandhi Loop Street, West C.I.T. Nagar, Chennai - 600 035.

(Near : T. Nagar Bus Stand, Landmark : Nandhi Statue)

Ph : 044 - 42867555, 42845818, Mob : 9840226187  : 7358194439

E-Mail : [enquiryatappolo@gmail.com](mailto:enquiryatappolo@gmail.com) | [www.appolosupport.com](http://www.appolosupport.com)

**WORK SMART NOT JUST HARD**