

TNPSC GROUP – II/IIA MAIN PROGRAM 2025

UNDER THE MENTORSHIP OF **R. SAM RAJESWARAN**, DIRECTOR, APPOLO STUDY CENTRE



ORIENTATION



WRITING METHODOLOGY



Note: Fee concession is applicable to the previous Main aspirants of the Appolo Study Centre.

Ph : 044 - 42867555, 42845818, Mob : 9840226187 📞 : 7358194439

TNPSC GROUP – IIA MAIN PROGRAM 2025

UNDER THE MENTORSHIP OF **R. SAM RAJESSWARAN**, DIRECTOR, APPOLO STUDY CENTRE



FLOW OF THE PROGRAM



**GROUP-IIA
MAIN**

**OCTOBER
05
2025**



**@
03.00P.M**

Note: Fee concession is applicable to the previous Main aspirants of the Appolo Study Centre.

Ph : 044 - 42867555, 42845818, Mob : 9840226187 📞 : 7358194439

**SCIENCE
&
TECHNOLOGY**

**GEOGRAPHY
OF
TAMILNADU**

**TAMILNADU
ECONOMY**

**SOCIAL ISSUES
IN
TAMILNADU**



**DISASTER
MANAGEMENT
IN TAMILNADU**

**TAMIL SOCIETY –
CULTURE &
HERITAGE**

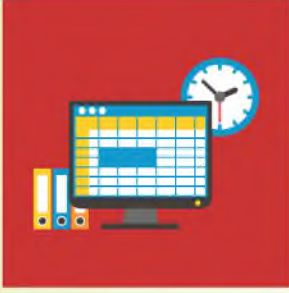
**BIO-DIVERSITY
OF
TAMILNADU**

**MODERN
HISTORY OF
TAMILNADU**

**ADMINISTRATION
OF
TAMILNADU**

**ENVIRONMENT
OF
TAMILNADU**

INTENSIVE CLASSES



EXCLUSIVE SESSION

- ☐ Tamil Eligibility
- ☐ Current Affairs



SPECIAL SESSION

- ☐ General Intelligence and Reasoning

CRISP STUDY MATERIALS

- ☐ General Studies
- ☐ Tamil Eligibility
- ☐ Current Affairs
- ☐ General Intelligence & Reasoning



REFERENCE HALL ACCESS

To Refer Books, Materials ☐
Journals and News Paper Clippings

REGULAR TESTS

- ☐ Subject-Wise Tests
- ☐ Unit-Wise Tests
- ☐ Language tests
- ☐ General Intelligence and Reasoning Test
- ☐ Tamil Eligibility Test (Descriptive)



MANDATORY TEST SERIES

- Unit-Wise Tests ☐
- Walk-In Tests ☐
- General Intelligence and Reasoning Test ☐
- Model Tests ☐



TNPSC GROUP II & IIA EXAM (28.09.2025)

TENTATIVE ANSWER KEY - GENERAL ENGLISH

1. Which of the following phrases can be quoted as an example for sound images from the poem "Sea Fever"?
1. Wheels kick
 2. Seagulls cry
 3. Clouds flying
 4. Running tide
 5. Sails shaking
 6. Wind's song
- a. 1, 2 and 3 b. 3, 5 and 6
c. 2, 4 and 6 d. 3, 4 and 5
e. Answer not known
2. Choose the correct 'Synonym' by matching column 'A' and 'B'.
- | Column - A | | Column - B | |
|---------------|--|-----------------------|--|
| A. Champing | | 1. Confusing | |
| B. Perplexing | | 2. Listening, heading | |
| C. Thronging | | 3. Munching, chewing | |
| D. Harkening | | 4. Crowding | |
- | | A | B | C | D |
|-----------|------------------|----------|----------|----------|
| a. | 3 | 1 | 4 | 2 |
| b. | 2 | 3 | 1 | 4 |
| c. | 1 | 2 | 3 | 4 |
| d. | 4 | 1 | 2 | 3 |
| e. | Answer not known | | | |
3. Fill in the blanks using the correct words given in the options.
Children like to _____ crispy snacks. But the author in seventeen oranges was very fond of _____ oranges. Eventually, he was forced to _____ all the _____ including _____.

1. eating
2. swallow
3. munch
4. pips
5. chunks
- a. 2 1 4 5 3
- b. 2 3 1 5 4
- c. 1 3 2 4 5
- d. **3 1 2 5 4**
- e. Answer not known

4. Which of the following statements are true about Jawaharlal Nehru?
- i. He wrote the book "Glimpses of Indian History".
 - ii. He was the First Prime Minister of India.
 - iii. He is considered to be the architect of the modern Indian Nation State.
- a. (i) only
 - b. **(ii) and (iii) only**
 - c. (i) and (ii) only
 - d. (i) and (iii) only
 - e. Answer not known

5. Translate the following sentence into English.

Choose the correct translation from the options given of the sentence given below.

- a. **I will have completed this work by tomorrow.**
- b. I would have finished this work by tomorrow.
- c. I have completed this work by this time tomorrow.
- d. I would have completed this work by this time tomorrow.
- e. Answer not known

6. Sentence : They were being followed when they left the building.
Question : Which of the following Tamil sentences best conveys the meaning of the given English sentence?

- (A)
- (B)
- (C)
- (D)
- a. (A) and (B)
- b. **only (B)**
- c. (A) and (D)
- d. only (C)
- e. Answer not known

7. Passage : A company facing declining market share considered two options: aggressive price cuts or a niche product line targeting a specific consumer segment. The CEO, known for his long-term vision, argued that the price cuts would only offer temporary relief and Erode brand value. He emphasized building a loyal customer base through unique product offerings and differentiated service.

Question : Based on the passage, which of the following is most likely to be true?

- (A) The company is primarily focused on short-term financial gains.
- (B) The CEO of the company prioritizes sustainable growth and brand loyalty.
- (C) The company's main challenge is a lack of production capacity.
- (D) The niche product strategy has proved to be successful for the company.

a. Only (A)

b. Both (A) and (B)

c. Only (B)

d. Both (C) and (D)

e. Answer not known

8. Passage : Crypto currencies and traditional stocks both involve investment. Crypto currencies are highly volatile, stocks are relatively stable. Both are susceptible to market fluctuations, albeit differently.

Question : Which of the following statements accurately compare crypto currencies and stocks as described in the passage.

- (A) Crypto currencies and stock involve no investment
- (B) Crypto currencies and stocks both involve investment
- (C) Crypto currencies and stocks both immune to market fluctuations
- (D) Crypto currencies and stocks react differently to market fluctuations

a. (B) and (D)

b. (A) and (C)

c. (D) and (A)

d. (D) and (C)

e. Answer not known

- Question: Which of the following statements accurately describes the sequence of events in the passage?

- a. (A) and (D)
- b. (D) and (B)

- e. Answer not known

- (A) This shift has challenged for the motif of artistic expression.

- (C) Apparently, the boundaries between different artistic connections are merged for good.

- a. (B), (D), (A), (C) b. (A), (C), (B), (D)

- c. (D), (B), (C), (A) d. (C), (A), (D), (B)

- e. Answer not known

- S1 : The study of intellectual history provides significant insights into the development of human history.

- Q : Intellectual history often involves understanding the evolution of main concepts and their impact on the society.

- R : Consequently interpretations of these concepts can widely vary depending on the researchers' perspective.

D : Moreover, these concepts are frequently revisited and reinterpreted over the period.

S6 : Essentially, it seeks to enhance the complex intersection between ideas and their socio-cultural milieu.

a. S1, S, Q, P, R, S6

b. S1, Q, S, R, P, S6

c. S1, R, P, Q, S, S6

d. S1, P, S, Q, R, S6

e. Answer not known

12. In a legal context, which of the following sentences use the word 'right' appropriately?

(A) Turn right at the next intersection.

(B) It is your right to remain silent.

(C) The answer is right in front of you.

(D) He wanted to right the wrong he did to his sister.

a. (A) and (C)

b. Only (B)

c. Only (C)

d. (C) and (D)

e. Answer not known

13. Which pair is an example of homophones?

a. Read and Read

b. Light and dark

c. Bear and bare

d. Pretty and beautiful

e. Answer not known

14. Which of the following British English words in Column A are incorrectly paired with the American English words in Column B?

Column A

Column B

1. Courgette

- Egg plant

2. Rocket

- Arugala

3. Aubergine

- Zucchini

4. Fringe

- Bangs

a. 1 and 2

b. 2 and 4

c. 3 and 4

d. 1 and 3

e. Answer not known

15. In the given pairs, the type of compound word is given in Column A and the examples are given in Column B. Identify the incorrect pairs of types and their examples.

Column A

Column B

1. Open compound words

-

snowman

25. The Acronym of the term 'DGTD' is
a. Direct General Telecommunication Department
b. District Grant Tax Department
c. Digital Government Tele Department
d. Directorate General of Technical Development
e. Answer not known
26. Choose the correct choices.
Navika Sagar Parikrama was a project to
1. Promote Economical status of women.
2. Empower women to attain their full potential.
3. Promote reservation of women in the Indian Navy.
4. Promote ocean sailing activities.
a. 1 and 2 are correct **b. 2 and 4 are correct**
c. 3 and 4 are correct d. 2 and 3 are correct
e. Answer not known
27. Who inspired Arthur Conan Doyle to create the character "Sherlock Holmes"?
(A) Dr. Watson
(B) Dr. Ainstree
(C) Inspector Smith
(D) Joseph Bell
a. (A) and (C) b. (B) only
c. (C) and (D) **d. (D) only**
e. Answer not known
28. Translate :
Choose the correct English translation from the options which best conveys the meaning of the given sentence.
a. The birds are flying b. Birds fly
c. The birds were flying d. The birds will fly
e. Answer not known
29. What is word for word translation called?
a. Literary translation **b. Literal translation**
c. Administrative translation d. Machine translation
e. Answer not known

30. Pick the correct English word for J{z;btplhNj from the options given.
a. Don't induce me b. Don't indulge me
c. Don't talk to me d. Don't make me do what I don't want to
e. Answer not known
31. Frame a question to get the following answer:
Why _____?
He has gone to the railway station to see off his cousin.
a. Why has he gone to the railway station?
b. Why he went to the railway station?
c. Why he go to the railway station?
d. Why have he gone to the railway station?
e. Answer not known
32. Passage : A rural community lacked access to reliable internet and digital devices. Local schools struggled to integrate technology into their curriculum and small businesses found it difficult to compete with online retailers. Community leaders proposed setting up a shared digital center, but residents feared the potential for increased surveillance and data misuse.
Question : Based on the passage, which of the following statements are most likely true?
(A) The digital divide is primarily an urban phenomenon.
(B) The community is experiencing both economic and educational disadvantages.
(C) There is complete agreement on the need for a digital center.
(D) Concerns about privacy are hindering efforts to bridge the digital divide.
a. Both (b) and (d) b. Both (a) and (b)
c. Both (a) and (d) d. Both (b) and (c)
e. Answer not known
33. Passage : The old train chugged along the tracks, its rhythmic clanking a familiar sound. Steam billowed from its engine, creating a white cloud against the blue sky. Passengers gazed out the

windows, watching the landscape roll by. The whistle blew, a long, mournful sound.

Question : Match the description of the train journey in Column A with their meanings in Column B.

	Column A				Column B			
(A)	Rhythmic clanting				1. Creates a visual effect			
(B)	Steam billows				2. Provides an auditory experience			
(C)	Passengers gazing				3. Highlights the pace of the train			
(D)	Mournful whistle				4. Indicates observation and travel			

	A	B	C	D
a.	4	2	1	3
b.	1	2	4	3
c.	2	1	4	3
d.	3	4	2	1
e.	Answer not known			

34. Complete the sentence below, choosing the suitable words from the options given.

He is at the _____ in the organization.

- a. Herculean Task
b. High time
c. Hitch hike
d. Helm of affairs
e. Answer not known

35. Complete the sentence given below, choosing the most appropriate words from the options given.

_____, I was born on exactly the same day as my wife.

- a. as if
b. frighteningly
c. my 'eye!'
d. funnily enough
e. Answer not known

36. Scenario : You are a volunteer for a local charity and need to know the specific items the charity currently needed for donations. Write an e-mail to the charity's co-ordinator asking for an updated donation list:

Type of Query:

- A. Charity Support Inquiry
B. Material Request
C. Donation Item Request

D. Volunteer co-ordination

a. only (A)

b. only (C)

c. only (B)

d. (A), (B), (C)

e. Answer not known

37. A famous celebrity wants to experience a normal day without being recognized, visited a local bookstore.

Which of the following best describes their state?

a. Ubiquitous

b. Ostentatious

c. Incognito

d. Gregarious

e. Answer not known

38. Choose the correct "Synonym" for the underlined word.

"Chuck is mendacious about his vegetarianism".

a. untruthful

b. proud

c. unhappy

d. clear

e. Answer not known

39. Choose the antonyms of the following underlined words.

The driver known for his cautiousness was surprised by the road traffic. As his talent was innate, he had to drive slowly.

A. Gloomy, active

B. Dim, retain

C. Recklessness, acquired

D. Subtle, intolerant

a. (D)

b. (C)

c. (A)

d. (B)

e. Answer not known

40. Fill in the blank with the suitable word:

"The pupil was asked to _____ the mistake".

a. correct

b. condone

c. clarify

d. rectify

e. Answer not known

41. Choose one word to substitute "Creature having both male and female organ".

- a. Omnigenous
- b. Queer
- c. Uxorious
- d. Hermaphrodite**
- e. Answer not known

42. Choose the correct answer by word creation.

What is the negative case of consistent?

What is the negative case of embark?

- a. inconsistent, inembark
- b. inconsistent, disembark**
- c. inconsistent, unembark
- d. disconsistent, nonembark
- e. Answer not known

43. Expand the term IPCC.

- a. International Pollution Control Council
- b. International Panel of Climate Control
- c. Interim Panel of Climate Change
- d. Intergovernmental Panel on Climate Change**
- e. Answer not known

44. Which of the following is an imperative sentence?

- (A) Who are you?
- (B) How did you explain this question?
- (C) Clean your room.
- (D) What a great statue!

- a. (A)
- b. (B)
- c. (C)**
- d. (D)

e. Answer not known

45. "Let my head be shattered to pieces" is an

- a. Interrogative sentence
- b. Affirmative sentence
- c. Imperative sentence**
- d. Exclamatory sentence

e. Answer not known

46. Transform the following assertive sentence into an imperative sentence:

'You should answer all the questions'.

- (A) Should you answer all the questions.
- (B) Answer all the questions.
- (C) You answer all the questions.
- (D) All questions should be answered.

- a. (A)
- b. (B)
- c. (C)
- d. (D)**
- e. Answer not known

47. Identify the sentence.

“He commented how beautiful the girl was”.

- a. Simple sentence
- b. Compound sentence
- c. Complex sentence**
- d. Interrogative sentence
- e. Answer not known

48. The phrase ‘A crown made of gold’ is

- a. an adjective phrase**
- b. an adjective clause
- c. an adverbial phrase
- d. an adverbial clause
- e. Answer not known

49. The three structures of the positive degree are

- a. As ... as, So-as, No other ... as ... as**
- b. As ... so, and-so, but...so
- c. So ... so, So-but, So ... and
- d. None of the above
- e. Answer not known

50. Choose the sentence with the correct use of the comparative degree:

- A. He is more smarter than anyone in the class.
- B. This bus is less more crowded than the other.
- C. This sum is less complicated than the previous one.
- D. The game is more easier than expected.

- a. (A)
- b. (B)
- c. (C)**
- d. (D)
- e. Answer not known

51. What is a potential benefit of ‘future proofing’ a business?

- a. Increased short term profits
- b. Reduced need for innovation
- c. Enhanced resiliation to market changes**
- d. Decreased consumer satisfaction
- e. Answer not known

- B. Lights
C. People
D. Path of a valley
E. Insects
2. Flicker
3. Scuttle
4. Crumble
5. Huddle

	A	B	C	D	E
a.	3	2	4	5	1
b.	4	2	5	1	3
c.	2	3	1	5	4
d.	1	5	3	4	2
e.	Answer not known				

57. Which of the following statements are true about the play "The Tempest"?

- 'The Tempest' was written in 1500.
 - It is considered to be one of the last plays of William Shakespeare.
 - It is believed that the play 'The Tempest' was based on an actual wreck of a ship.
- a. (ii) only
c. (ii) and (iii) only
e. Answer not known
- b. (i) and (ii) only
d. (i) and (iii) only

58. Passage : 'Aadhaar', India's unique ID has expanded from welfare to various diverse services. It aimed to reduce fraud and boost financial inclusion. Concerns about privacy and exclusion persist. Court rulings balance security with rights.

Question : Which of the following statements accurately reflect the main ideas presented in the passage about Aadhaar?

Select all statements that apply.

- A. Aadhaar is only used for welfare distribution.
B. Aadhaar's scope has grown beyond it's initial purpose.
C. Aadhaar aimed to reduce fraud and improve financial inclusion.
D. Privacy and exclusion concerns are associated with Aadhaar.
- a. (B), (C), (D)**
c. (B) and (C)
e. Answer not known
- b. (A), (B), (C), (D)
d. Only (B)

59. With a sense of optimism slowly creeping in, the banking industry is hopeful that 2025 will bring better growth prospects. This optimism stems from a number of factors. For one, the Government is working hard to revitalise the industrial growth in the country. Secondly, the RBI has initiated a number of measures that would go a long way in helping the banks to restructure themselves thereby improving the profile of non-performing banks.
What is the biggest challenge for banks in India?
- a. To handle corporate borrowers
 - b. To pursue targets of financial inclusion
 - c. Ever increasing level of non-performing assets**
 - d. Onslaught of foreign banks
 - e. Answer not known
60. Which question type illustrates a point or focuses attention on an idea or principle?
Choose from the options given below.
- a. Rhetorical**
 - b. Funnel
 - c. Inference
 - d. Divergent
 - e. Answer not known
61. Passage: The Tamil Nadu climate change mission focusses on mitigating the impact of climate change through various initiatives. Reforestation projects aim to increase carbon sinks and restore biodiversity. Coastal zone Management plans protect vulnerable shorelines from rising sea-levels. Promotion of renewable energy sources, like solar and wind power, reduce dependence on fossil fuels. Community-based adaptation programs build resilience in local populations facing climate - related challenges.
Question: Match the initiatives of the Tamil Nadu climate change mission in Column A with their expected outcomes in Column B.
- | Column A | Column B |
|----------------------------------|--|
| A. Reforestation projects | 1. Reduces reliance on fossil fuels |
| B. Coastal Zone Management plans | 2. Enhances local resilience to climate impact |

C. Promotion of renewable energy 3. Increases carbon absorption and biodiversity

D. Community-based adaptation programs 4. Protects shorelines from rising sea levels

	A	B	C	D
a.	2	4	1	3
b.	1	4	2	3
c.	3	4	1	2
d.	4	3	1	2

62. Passage : Reforestation projects restore degraded eco systems. They increase biodiversity and improve air quality. They also enhance water retention. These efforts support long-term environmental sustainability.

Question : Which of the following statements best support the claim that reforestation is beneficial?

- (A) Reforestation projects decrease biodiversity.
- (B) Reforestation projects restore degraded eco systems.
- (C) Reforestation projects improve air quality.
- (D) Reforestation projects enhance water retention.

- a. (B), (A), (C)
- b. (B), (D), (A)
- c. (B), (C), (D)**
- d. (A), (B), (C)
- e. Answer not known

63. Which of the following statements are NOT characteristic of a formal letter?

- A. Use of professional language.
- B. Clear and understandable structure.
- C. Use of slang or unprofessional expressions.
- D. Convey official information.

- a. (A)
- b. (B)
- c. (C)**
- d. (D)
- e. Answer not known

64. Find out the best inference based on the passage:

There were different streams of freedom movements in colonial India carried out by the moderates, liberals, radicals, socialists and so on.

Which of the following is the best inference from the above statement?

- a. The emergence of nationalism in colonial India led to our independence
- b. Nationalism in India emerged in the context of colonialism
- c. Nationalism in India is homogenous
- d. Nationalism in India is heterogenous**
- e. Answer not known

65. Choose the correct code to fill in the blanks.

- 1. The Manager was known for his positive approach to decision-making, which often led to _____ result.
 - 2. The Chef's dish were not only _____ in taste but also elaborate in presentation.
 - 3. The Chief Guest's speech was so _____ that it left the audience motivated.
 - 4. The Student's decision was based on the _____ evidence, which made the outcome of the project predictable.
- a. conclusive, exquisite, excellent, inspiring
 - b. exquisite, excellent, inspiring, conclusive**
 - c. excellent, exquisite, inspiring, conclusive
 - d. inspiring, conclusive, excellent, exquisite
 - e. Answer not known

66. Complete the blanks using the phrasal verbs given in the options:

- 1. You'd better ring her _____ and tell her you'll be late.
 - 2. I invited her to drop _____ any time she was passing for a cup of tea.
 - 3. If you can't afford it, you'll have to do _____ it.
 - 4. He won't buy the car without trying it _____ on the road first.
- A. out
 - B. in
 - C. up
 - D. without
- a. 1 - (C), 2 - (D), 3 - (B), 4 - (A)
 - b. 1 - (B), 2 - (C), 3 - (A), 4 - (D)
 - c. 1 - (A), 2 - (C), 3 - (D), 4 - (B)
 - d. 1 - (C), 2 - (B), 3 - (D), 4 - (A)**
 - e. Answer not known

77. Identify the poetic works of 'Robert Frost'.
1. The Road Not Taken
 2. The Jungle Book
 3. Mending Wall
 4. Treasure Island
- a. 1 only b. 1 and 2 only
c. 1 and 3 only d. 2 and 4 only
e. Answer not known
78. Which of the following statements do not agree with Gieve Patel's views in the poem "On Killing a Tree"?
1. Cutting a tree is an act of murder.
 2. A simple jab of the knife will cut a tree.
 3. Disapproval of mankind is failure to care for the earth.
 4. The strength of the tree lies on its big branches.
- a. 1 and 2 **b. 2 and 4**
c. 3 and 4 d. 1 and 4
e. Answer not known
79. Identify the figure of speech in these lines.
Faster than a cheetah
With a tail that's miles long
Bigger than a mountain
So powerful and strong
- a. Imagery** b. Anaphora
c. Consonance d. Simile
e. Answer not known
80. Identify the incorrect sentence/sentences, according to the given statement.
Alfred Nobel was considered as –
1. Europe's richest Vagabond.
 2. A chemist, engineer and an aspiring poet.
 3. A man who felt guilty for having invented highly destructive things.
 4. Felt guilty for having earned so much money.
- a. 3 and 4 **b. 1 and 3**
c. 4 only d. 2 only

e. Answer not known

81. Identify the Incorrect Statements.

1. Mithali Dorai Raj is the first to score seven consecutive centuries.
 2. The mother tongue of Mithali is Tamil.
 3. Mithali is honoured with Padma Bhushan award.
 4. Mithali is nick named as "Tendulkar of Indian Women's Cricket".
 5. Mithali is not encouraged to play cricket by her family members.
- a. 1, 2 and 5 are incorrect **b. 1, 3 and 5 are incorrect**
c. 2, 4 and 5 are incorrect d. 2, 3, 4 are incorrect
e. Answer not known

Passage (82-84):

'E-Sevai centers', a cornerstone of Tamil Nadu's e-governance, streamlines citizen access to essential services. These centers facilitate online delivery of documents like birth certificates and land records, reducing bureaucratic delays. Integrated with state databases, they aim to enhance transparency and minimize corruption. However, challenges persist in ensuring consistent service quality across diverse locations. Digital literacy among rural population remains a crucial factor impacting implementation. Further, system integration and maintenance require continuous investment and skilled personnel. The long-term success of e-sevai depends on bridging the digital divide and maintaining a robust infrastructure.

82. What is the primary function of e-sevai centers as mentioned in the passage?

- a. to provide free internet access to rural population
b. to facilitate online delivery of essential government services
c. to train government employees in digital literacy
d. to manage state-level databases
e. Answer not known

83. The passage implies that the long-term sustainability of e-sevai primarily relies on:

- a. increasing the number of physical e-sevai centers
b. focussing solely on urban areas
c. bridging the digital divide and maintaining a robust infrastructure

- d. reducing the number of available online services
- e. Answer not known

84. In the context of the passage 'streamline' means:

- a. Complicate
- b. Simplify**
- c. Delay
- d. Increase cost
- e. Answer not known

85. According to Dr. Montague, "Women are not only equal in intelligence to men, they have in reserve the genius of humanness, the highest form of intelligence. Man proceeds by analysis to study a problem, whereas women can even grasp it intuitively in its entirety".

What does the above passage imply?

- a. Equality in India
- b. Role of women in India
- c. Innate Intelligence of women
- d. About Dr.Montague
- e. Answer not known

Passage: The school's annual science fair showcased student projects, many experiments focussed on environmental issues. The judges awarded prizes based on creativity and scientific accuracy.

Question : Based on the passage, which of the following are true?

- (A) The science fair only displayed art projects.
- (B) The science fair included experiments about the environment.
- (C) The judges focused on students' fashion sense.
- (D) The science fair is held every two years.
- a. Only (A)
- b. Only (B)
- c. Only (C)**
- d. Only (D)
- e. Answer not known

86. Fill out the suitable inference :

She read the message and sighed, hinting at her _____.

- a. achievement
- b. proud moment**
- c. disappointment
- d. excitement
- e. Answer not known

87. Passage : Digital platforms enhance citizen access to government services. Online portals reduce bureaucratic delays. This implies increased transparency and efficiency. Streamlined processes foster public trust.

Which of the following can be best inferred from the passage?

- A. E-governance increases bureaucratic delays.
- B. E-governance potentially increases transparency.
- C. Streamlined processes can build public trust.

D. Digital platforms reduce citizen access to services.

- a. (A) and (B)
- b. (B) and (D)
- c. ' (B) and (C)
- d. (A) and (D)
- e. Answer not known

88. Passage : Renewable energy reduces carbon emissions. Solar and wind power are increasingly viable. This transition combats climate change. Sustainable energy solutions are vital for future generations.

Question : Which of the following statements best summarize the main points of the passage?

- (A) Renewable energy has no impact on climate change.
- (B) Renewable energy reduces carbon emissions.
- (C) Solar and wind power are becoming increasingly viable.
- (D) Sustainable energy solutions are crucial for future generations.

- a. (b), (a), (c)
- b. (b), (d), (a)
- c. (a), (b), (c)
- d. (b), (c), (d)
- e. Answer not known

89. Find, out the answer and fill up the blank :

You want to see him ? _____ .

- a. Beyond all question
- b. Over head and ears
- c. Out of the question!
- d. The ins and outs '
- e. Answer not known

90. "Will you tell me who is there?" is an example for _____ .

- a. Direct question
- b. Indirect question
- c. Exclamation
- d. Basic formation
- e. Answer not known

91. Scenario : You are a newly appointed Civil Servant in the Department of climate change.

Question : You are asked to communicate the department's initiatives to the public.

Which of the following collocations would be most effective in your communication strategy?

- A. to spread climate misinformation
- B. to raise public awareness about climate change impacts
- C. to minimize the urgency of climate action
- D. to engage in stakeholder consultations
- a. (A) and (C)
- b. (B) and (D)
- c. (B) and (C)
- d. (C) and (D)
- e. Answer not known

93. Identify the incorrect pairs of Idioms and phrases in the given pairs.

- 1. To brow beat - bully

2. To be at large - to blame each other
3. To knit the brow — to frown
4. To pass the buck - free
a. 1 and 3 **b. 2 and 4**
c. 1 and 2 d. 3 and 4
e. Answer not known
94. Select the correct parts of speech for the underlined word.
He makes rather a fuss about ordinary things
a. Adjective **b. Adverb**
c. Noun d. Conjunction
e. Answer not known
95. Select the correct meaningful sentence from the following:
a. The wages of sin are death b. His wages is Rs. 1,000 a day
c. Measles are a disease **d. Politics has divided the country**
e. Answer not known
96. Fill in the blanks with the correct form of the verb.
She _____ (is) tired because she _____ (clean) the house yesterday.
a. is, had been cleaning b. was, have been cleaning
c. was, had been cleaning d. is, has been cleaning
e. Answer not known
97. The interrogative form of 'You have to be there on Monday' will be
a. Will you be there on Monday?
b. Would you be there on Monday?
c. Can you be there on Monday?
d. Could you be there on Monday?
e. Answer not known
98. Transform the imperative sentence 'Give me a book' into an appreciative statement.
A. I'm glad that you have given a book
B. Thank you for giving a book
C. I appreciate you giving a book
D. Why do you not give a book?
a. (A) b. (B) c. (C) d. (D) e. Answer not known
99. Choose the correct verb form from the options given below.
Dogs usually _____ cats.
a. chased **b. chase** c. are chasing
d. were chasing d. Answer not known
100. Choose the correct verb form to fill the following statement:
"If she had studied well, she _____ in the examination".

a. **would have passed**

c. would pass

e. Answer not known

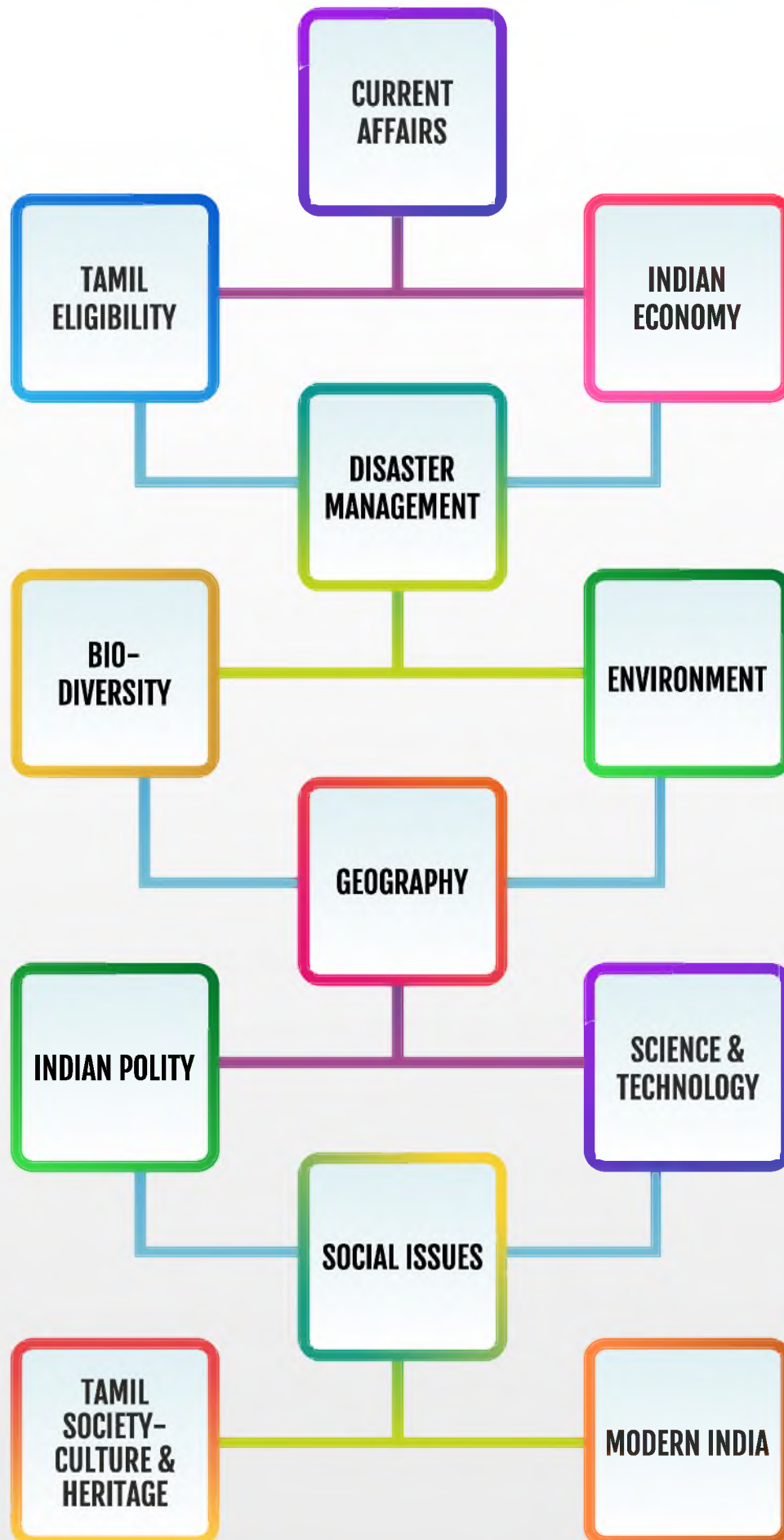
b. would passed

d. would be passed



PROGRAM HIGHLIGHTS

CLASSES FOR KEY AREAS



TESTS



REGULAR TEST SERIES

- Skill Tests
- Subject-wise Tests
- Unit-wise Tests

MANDATORY TEST SERIES

- Unit-wise Tests ■
- Walk-in Tests ■
- Model Tests ■



ADVISORY FOR MANDATORY TESTS

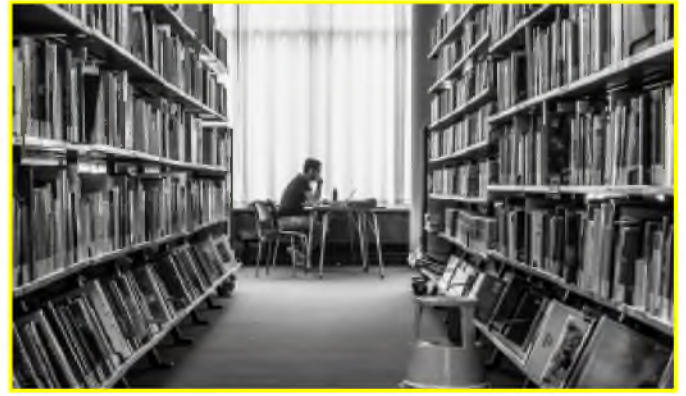
- To Simplify and Complete the Syllabus



FEEDBACK

- Individual Feedback ■
- General Feedback ■



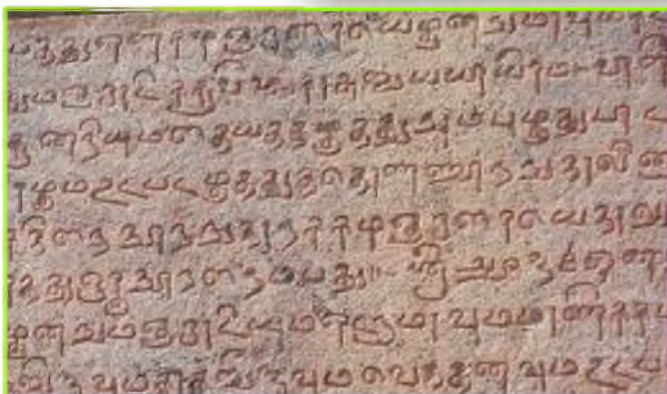


STUDY MATERIALS

- ◆ General Studies
- ◆ Tamil Eligibility
- ◆ Current Affairs
- ◆ Handouts

REFERENCE HALL ACCESS

- ◆ To Refer Books, Materials, Journals and Newspaper Clippings
- ◆ To Access Best Model Answer Papers
- ◆ To Enrich Presentation and Content



TNPSC GROUP – II A MAIN 2025



PROGRAM HIGHLIGHTS

CONGRATULATIONS STATE TOPPERS



NABILA. A

WRITTEN MARKS - 201.5

STATE TOPPER
RANK-1

**6 OUT OF 10
STATE TOPPERS**

ARE EXCLUSIVELY TRAINED AT
APPOLO STUDY CENTRE



RANK - 3

GANGA. P



RANK - 4

SOWMYA. K



RANK - 5

PRIYADHARSHINI. V



RANK - 6

SHANMUGA PREETHA. S



RANK - 7

SARAVANAN. M

WE DO NOT OFFER ASPIRANTS FREE MOCKS FOR PRELIMINARY / MAIN / INTERVIEW TO CLAIM FINAL RESULTS.

APPOLO STUDY CENTRE



RANK - 2

RAJARAM. SP

TNPSC
GROUP-IIA
RESULT
2025



RANK - 6

PUGALANBU. K

CONGRATULATIONS STATE TOPPERS

அரசு அலுவலராக உற்சாகத்துடன் மக்கள் பணியாற்ற வாழ்த்துகள் !

APPOLO STUDY CENTRE

25, Nandhi Loop Street, West C.I.T Nagar, Chennai - 600035.

(Near: T. Nagar Bus Stand, Landmark: Nandhi Statue)

Email: enquiryatappolo@gmail.com | www.appolosupport.com

Mobile: 9840226187, 9500099706 Ph: 044-24339436,

24340364, 42845818, 42867555 📞: 7358194439