

## EVERYDAY CURRENT AFFAIRS – MAY 22, 2024

### SCIENCE, TECHNOLOGY & ENVIRONMENT

#### ➤ IndiaAI Mission

- ✓ The Cabinet has greenlit an ambitious financial allocation of over Rs 10,300 crore for the IndiaAI Mission, aimed at fortifying India's AI innovation ecosystem.



- ✓ Spearheaded by a public-private partnership model, this significant investment over the next five years is poised to catalyze various strategic initiatives, including compute infrastructure expansion, startup empowerment, and ethical AI deployment.
- ✓ A pivotal component of the IndiaAI Mission, the IndiaAI Compute Capacity project aims to erect a cutting-edge, scalable AI computing infrastructure.

### RANKS

#### ➤ WEF Travel & Tourism Development Index 2024

- ✓ India Rises to 39th Position in WEF Travel & Tourism Development Index 2024.



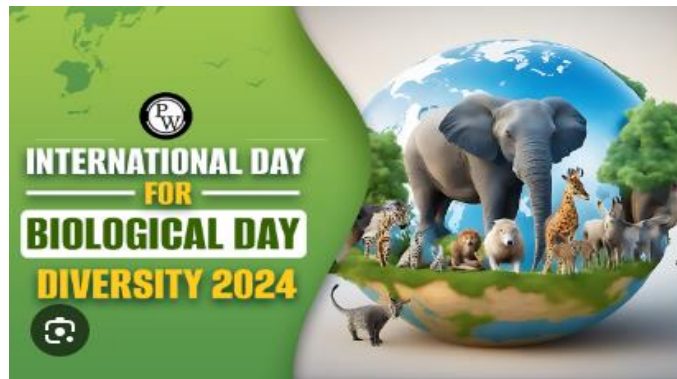
- ✓ India has ascended to the 39th spot in the World Economic Forum's Travel & Tourism Development Index 2024, marking a significant improvement from its 54th position in 2021.
- ✓ While the US topped the list, India is ranked highest in South Asia and among the lower-middle-income economies, the WEF said.
- ✓ Despite challenges posed by the pandemic, India showcases resilience and competitiveness in various aspects of its travel and tourism industry.

## IMPORTANT DAYS

- **World Metrology Day: May 20**
- ✓ World Metrology Day is celebrated annually on May 20 globally to understand the meaning of the science of measurement and the reasons behind our heavy reliance on it.



- ✓ The day commemorates the anniversary of the signing of the Metre Convention in 1875.
  - ✓ The theme for World Metrology Day 2024 is 'Sustainability', which encourages us to explore how metrology contributes to improving our lives every day.
- **International Day for Biological Diversity: May 22**
  - ✓ The International Day for Biological Diversity is celebrated every year on May 22. This year, it falls on a Wednesday.



- ✓ The theme for 2024 is “Be Part of the Plan.”
- ✓ This theme encourages governments, indigenous peoples and local communities, non-governmental organizations, lawmakers, businesses, and individuals to showcase their efforts in supporting the implementation of the Biodiversity Plan.



APP  
STUDY CENTRE